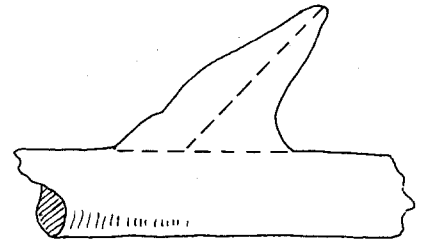
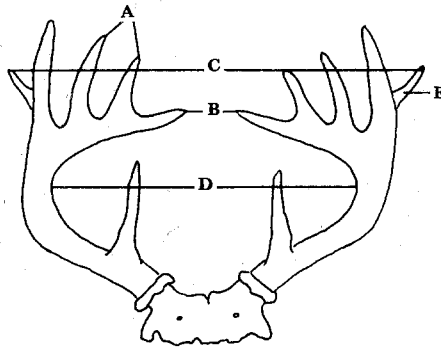
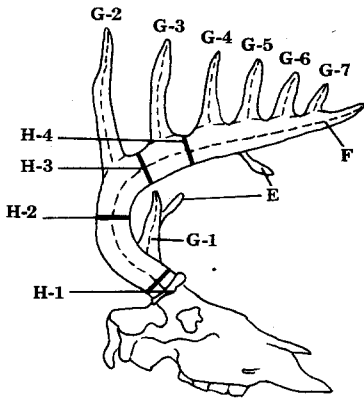


BUCKEYE BIG BUCK CLUB
 In cooperation with the
 Ohio Department of Natural Resources
 Division of Wildlife

OFFICIAL SCORING RECORD FOR WHITE-TAILED DEER

(Typical - 140 minimum score)



Detail of Point Measurement

SEE OTHER SIDE FOR INSTRUCTIONS		Supplementary Data		Column 1	Column 2	Column 3	Column 4
		R.	L.	Spread Credit	Right Antler	Left Antler	Difference
A. Number of Points on Each Antler							
B. Tip to Tip Spread							
C. Greatest Spread							
D. Inside Spread of MAIN BEAMS		Spread credit may equal but not exceed length of longer antler					
E. Total of Lengths of all Abnormal Points							
F. Length of Main Beam							
G-1 Length of First Point, if present							
G-2. Length of Second Point							
G-3. Length of Third Point							
G-4. Length of Fourth Point, if present							
G-5. Length of Fifth Point, if present							
G-6. Length of Sixth Point, if present							
G-7. Length of Seventh Point, if present							
H-1. Circumference at Smallest Place Between Burr and First Point							
H-2. Circumference at Smallest Place Between First and Second Points							
H-3. Circumference at Smallest Place Between Second and Third Points							
H-4. Circumference at Smallest Place between Third and Fourth Points or half way between Third Point and Beam Tip if Fourth Point is missing							
TOTALS							
ADD	Column 1	Date killed		County where killed			
	Column 2	Killed by (print)				Deer Tag No.	
	Column 3	Address					
Total		Telephone number			Social Security number		
SUBTRACT Column 4		Taken by (check one) <input type="checkbox"/> Modern shotgun <input type="checkbox"/> Muzzleloader <input type="checkbox"/> Longbow <input type="checkbox"/> Crossbow <input type="checkbox"/> Revolver					
FINAL SCORE		Remarks (Mention any abnormalities)					

I certify that I have measured the above trophy on _____ -
20 _____ - at

(address) _____ State _____
and that these

measurements and data are, to the best of my knowledge and belief, made in accordance with the instructions given.

Witness: _____ Signature: _____
(Official Measurer)

INSTRUCTIONS

All measurements must be made with a flexible steel tape to the nearest one-eighth of an inch. Wherever it is necessary to change direction of measurement, mark a control point and swing tape at this point. To simplify addition, please enter fractional figures in eighths. Official measurement cannot be taken for a least sixty days after the animals was killed.

Supplementary Data measurement indicate conformation of the trophy, and none of the figures in Lines A, B and C are to be included in the score. Evaluation of conformation is a matter of personal preference. Excellent, but non-typical white-tailed deer heads with many points shall be placed and judge in a separate class.

- A. Number of points on each antler. To be counted, a projection must be at least one inch long AND its length must exceed the length of its base. All points are measured from tip of point to nearest edge of beam as illustrated. Beam tip is counted as a point but no measurer as a point.
- B. Tip to Tip Spread measured between tips of Main Beams.
- C. Greatest Spread measured between perpendiculars at right angles to the center line of the skull at widest part whether across main beams or points.
- D. Inside Spread of Main Beams measured at right angles to the center line of the skull at widest point between main beams. Enter this measurement again in "Spread Credit" column if it is less than or equal to the length of longer antler.
- E. Total of lengths of all Abnormal Points. Abnormal points are generally considered to be those non-typical in shape or location.
- F. Length of Main Beam measured from lowest outside edge of burr over outer curve to the most distant point of what is or appear to be, the main beam. The point of beginning is that point on the burr where the center line along the outer curve of the beam intersects the burr.
- G-1-2-3-4-5-6-7. Length of Normal Points. Normal points project from main beam. They are measured from nearest edge of main beam over outer curve to tip. To determine nearest edge (top edge) of beam, lay the tape along the outer curve of the beam so that the top edge of tape coincides with he top edge of the beam on both sides of the point. Draw line along top edge of tape. This line will be base line from which point is measured.
- H-1-2-3-4. Circumference. If first point (G-1) is missing, take H-1 and H-2 at smallest place between burr and G-2. If G-4 is missing, take H4 halfway between G-3 and tip of main beam.

TROPHIES OBTAINED ONLY BY FAIR CHASE MAY BE ENTERED IN BUCKEYE BIG BUCK CLUB COMPETITION

To make use of the following methods shall be deemed UNFAIR CHASE and unsportsmanlike and any trophy obtained by use of such means is disqualified from entry:

- I. Spotting or herding game from the air, followed by landing in its vicinity for pursuit;
- II Herding or pursuing game with motor-powered vehicles;
- III Use of electronic communications for attracting, locating or observing game, or guiding the hunter to such game.
- IV. Hunting game confined by artificial barriers, including escape-proof fencing; or hunting game transported solely for the purpose of commercial shooting.

I certify that the trophy scored on this chart was not taken in UNFAIR CHASE as defined above.

I certify that it was not spotted or herded by guide or hunter from the air followed by landing in its vicinity for pursuit, nor herded or pursued on the ground by motor-powered vehicles.

I certify that this trophy was unconfined by artificial barriers.

I certify that this trophy was not a specimen transported for purposes of commercial hunting.

I certify that I have never been convicted of a violation of deer hunting laws.

I further certify that no electronic communications were used to attract, locate, observe, or guide the hunter to such game; and that it was taken in full compliance with the local game laws or regulations of the state.

Date _____ Hunter _____

The method of scoring and the rules of fair chase have been adapted from the North American Big Game Awards Program. We express our appreciation for permission to use this system.

North American Big Game Awards Program | c/o NRA Hunting Activities Dept. | 1600 Rhode Island Ave. N.W. |
Washington, D.C. 200036